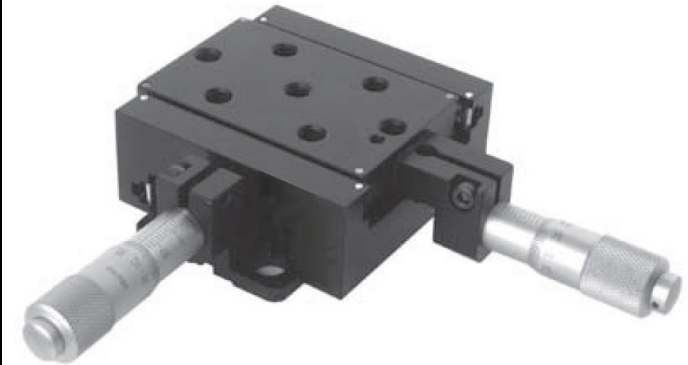


## CSTM-WM203-13L-73 - Data Sheet

### Dual Axis Precision Linear Stage

Feature	Value
<b>Body</b>	
Ext. Dimensions [mm]	Height: 25.4    Width: 113    Length:132
Platform	60.5mm × 60.5mm
Weight	0.39kg
Material	Aluminum (Black Anodize Finish)
Clamping Holes	M6
<b>Translation</b>	
Adjustment	Micrometer head, 0.5mm/Rev 0.01mm scale
Full range	13mm in each axis
Travel guide	Ball bearing
Fix	no fix screw
<b>Load Capacity</b>	
Max Horizontal Load	5kg
Max Vertical Load	0.5kg



For more information please enter [www.oemix.com](http://www.oemix.com)

